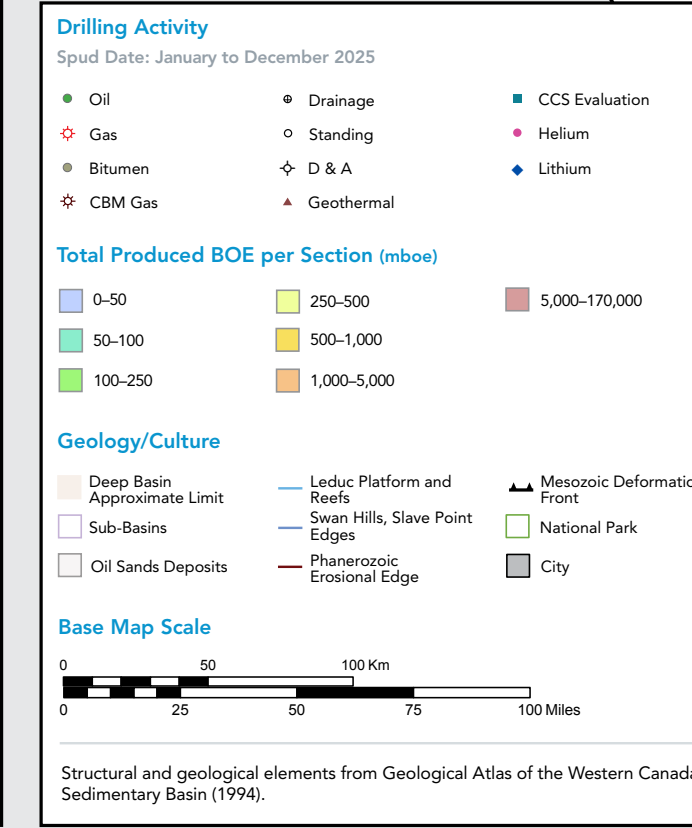
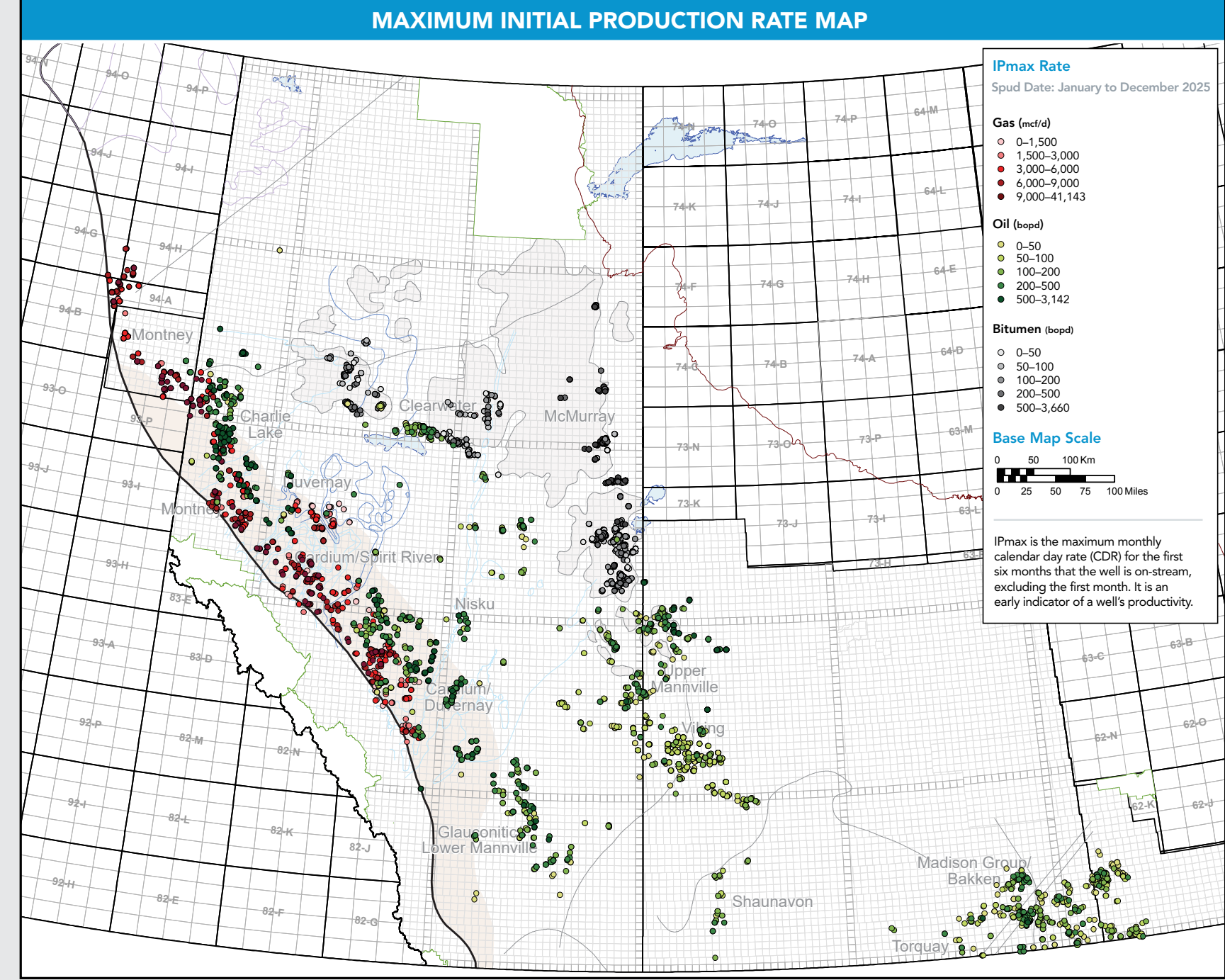
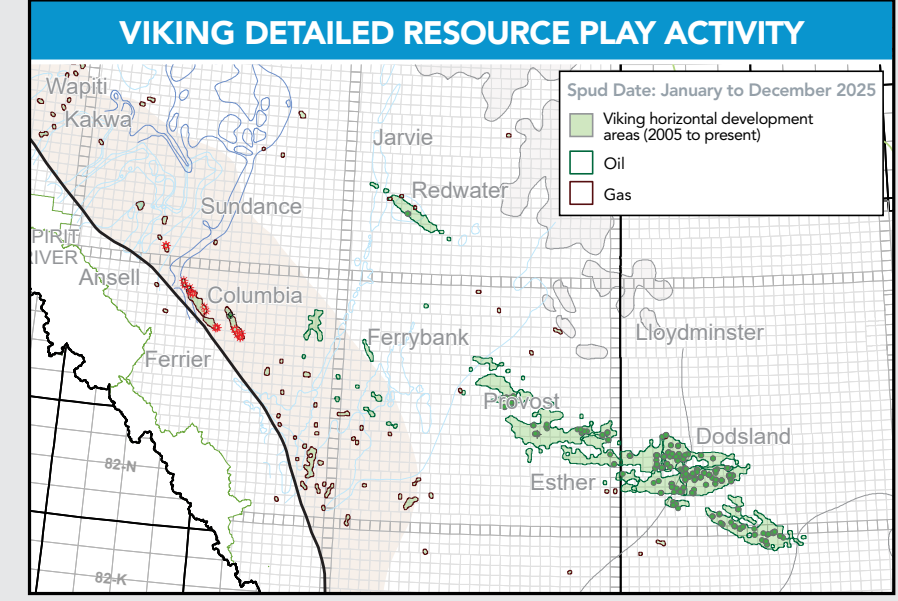
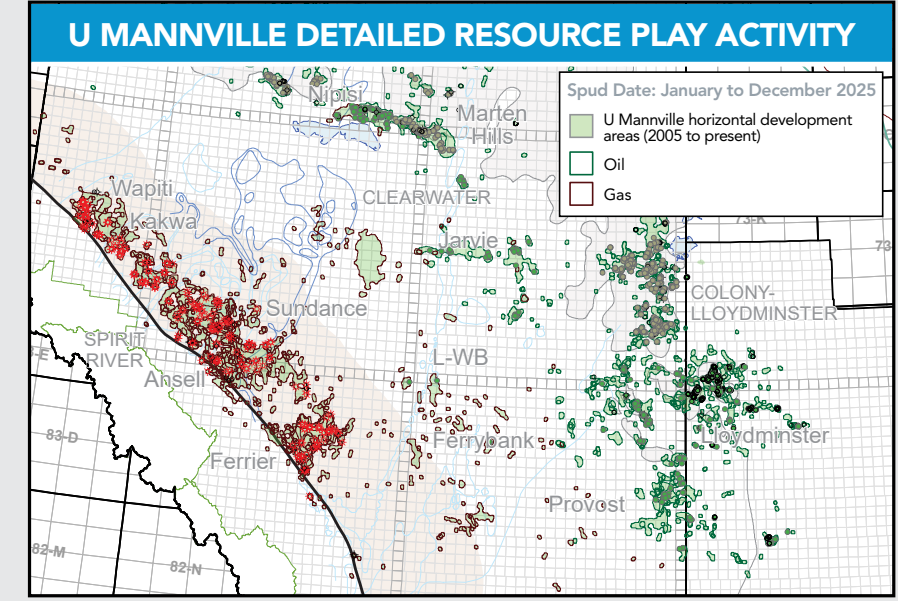
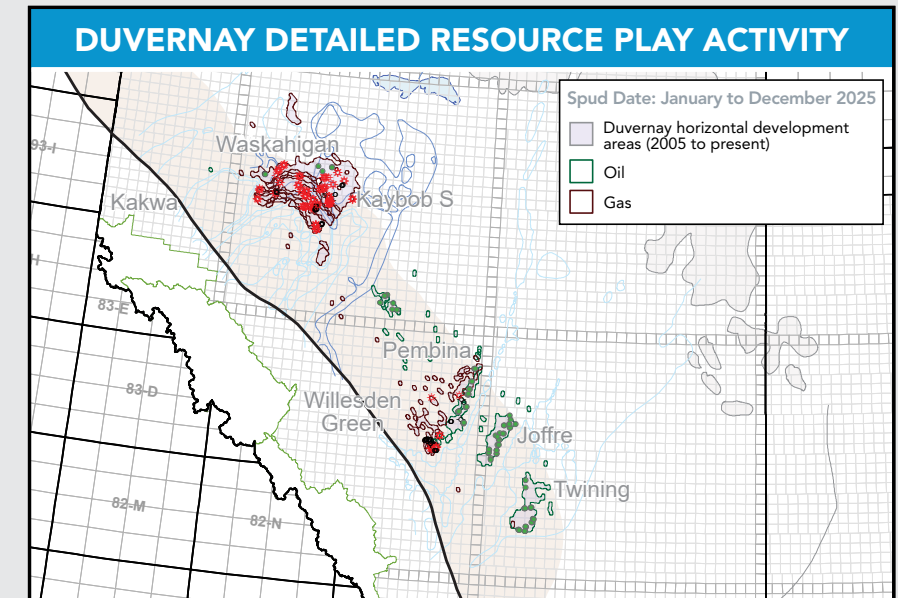
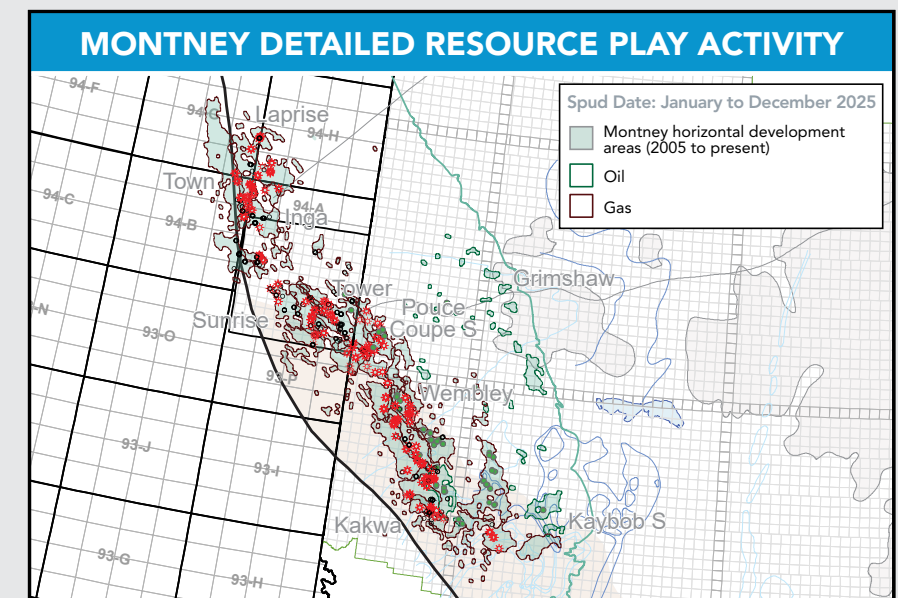


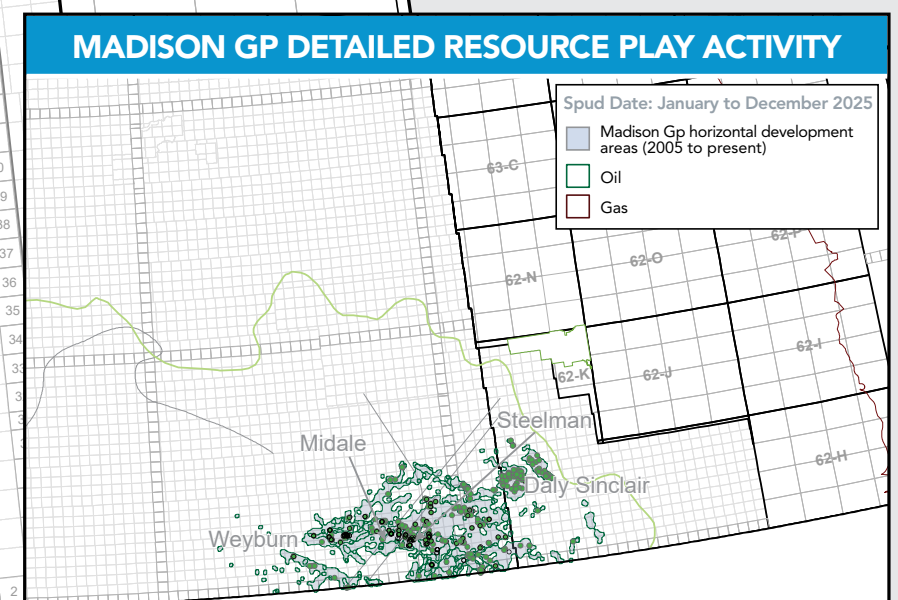
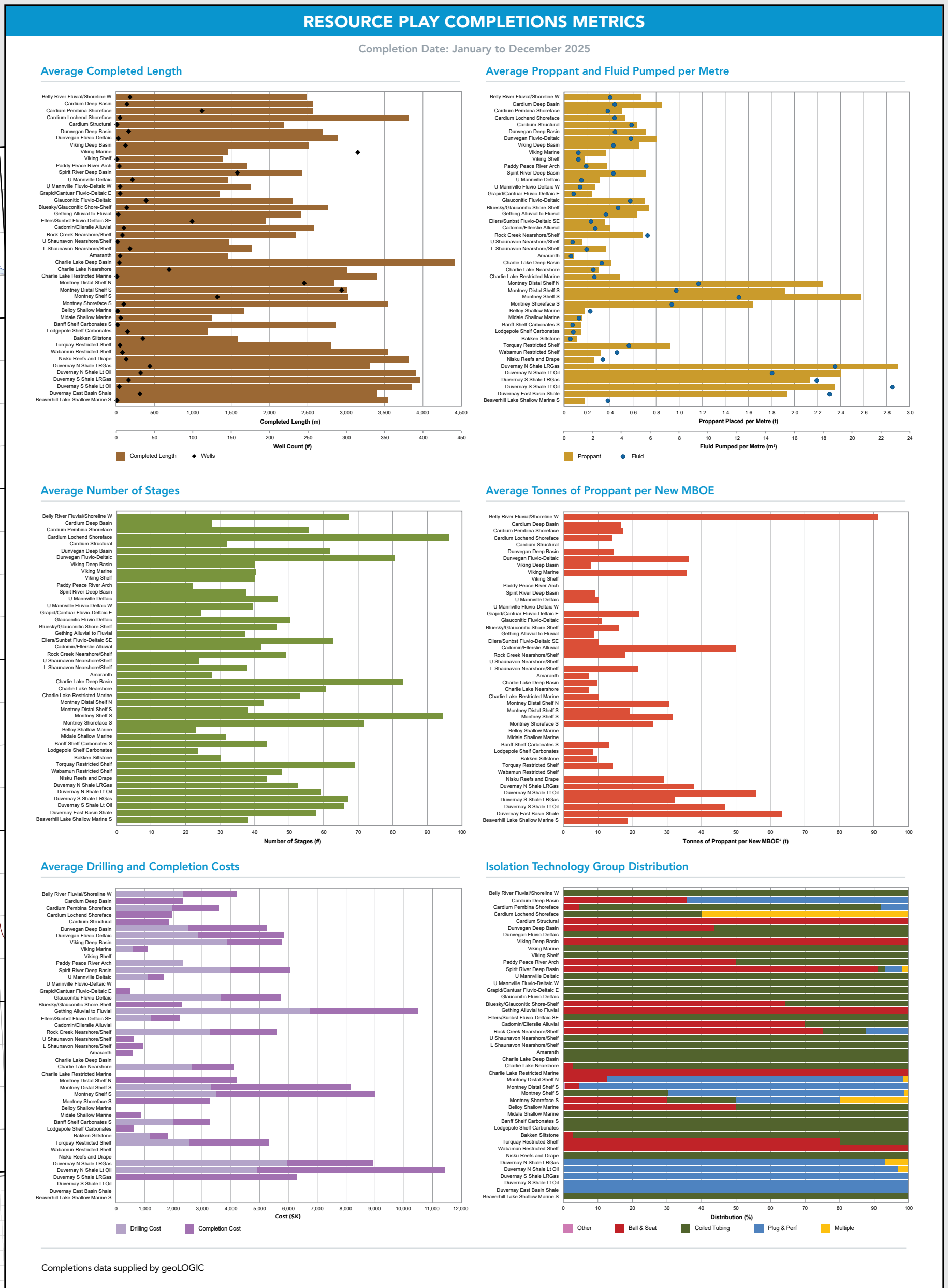
WESTERN CANADA RESOURCE PLAYS WITH DRILLING ACTIVITY - 2025 REVIEW



2025 KEY PLAY AVERAGE METRICS

Play	MD (m)	Lateral (m)	Pay (m)	Wells Drilled (2025)	D&C Costs (\$MM)	IPmax (bopd)
Montney Oil	5,600m	2,900m	300m	112	6.7	812
Montney Gas	5,775m	2,800m	300m	483	8.4	1,409
Spirit River	5,400m	1,300m	130m	241	6.2	1,357
Duvernay Oil	6,400m	3,600m	300m	88	8.5	718
Duvernay Gas	7,400m	3,600m	60m	132	11.3	878
Cardium	4,675m	2,700m	15m	174	3.9	424
Clearwater	2,575m	9,675m	20m	537	1.4	176
Viking	2,375m	1,400m	15m	362	1.3	139
Madison Group	2,200m	1,000m	15m	321	1.5	119

Data supplied by geOLOGIC except for some cost data from corporate website compilations. Wells Drilled based on unique licences, not UWs.



CDL Digest

CDL Play Maps

Technical Studies Library

Online Short Courses

